

Up On The Housetop

(Tracks 1 & 2)

BRIGHT

1 4 5 *f*

7

11 13

16

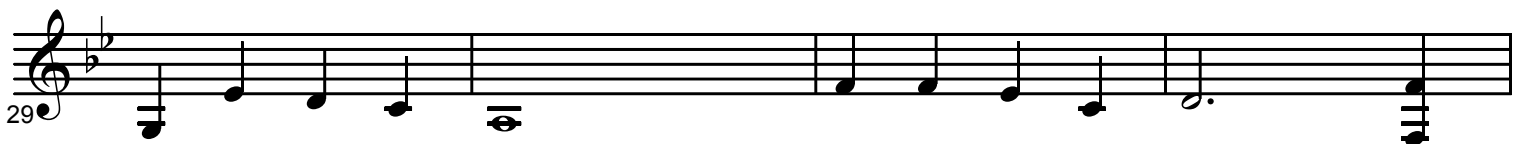
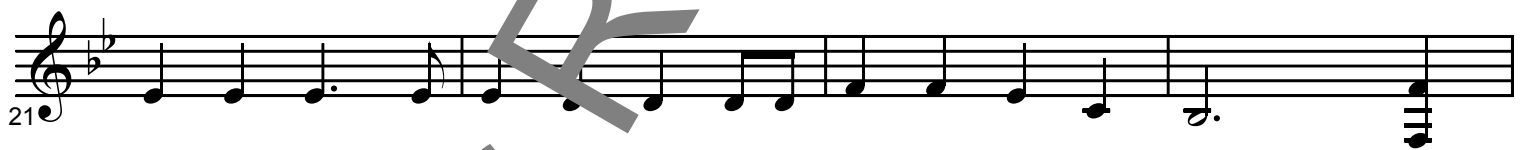
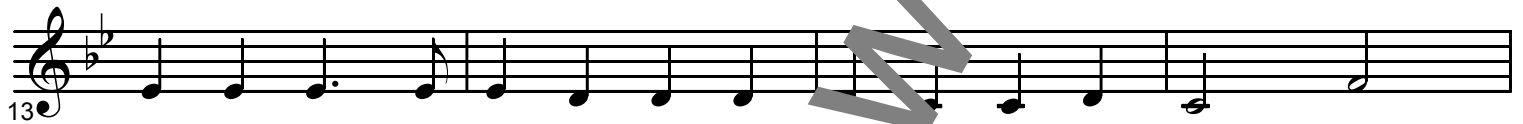
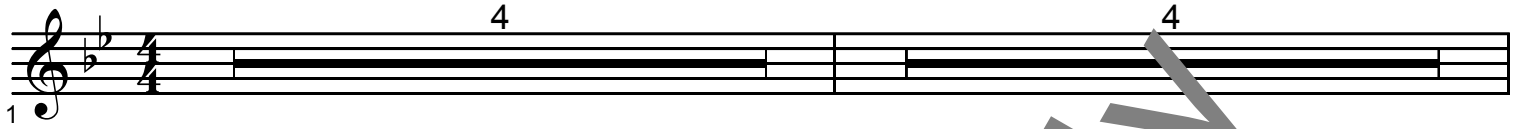
20 1 2

25 2 2

Jingle Bell Jam

(Tracks 3 & 4)

ROCKIN'!

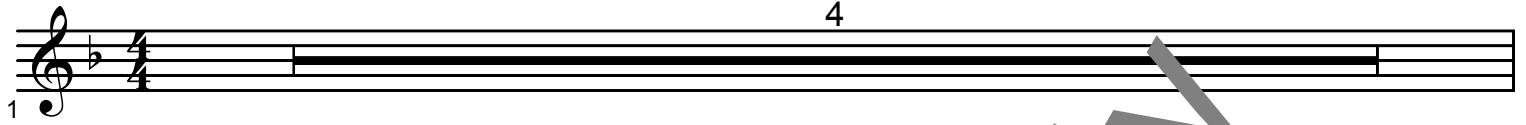


For Review Only

Deck The Halls

(Tracks 5 & 6)

WITH SPIRIT

1 

5 (You can also play this song an octave lower)

5 

9 

13 

17 

21 

FOR REVIEW ONLY

Silent Night

(Tracks 7 & 8)

FLOWING

1

f

4

10

mp

18

mf

21

26

mp

mf

31

p

3

mf

Good King Wenceslas

(Tracks 9 & 10)

MERRILY

5 6

mf

8

14

14

4 27

20

f

29

35

4

41

fp *f*

We Three Kings

(Tracks 11 & 12)

COOL

4

5

1

mf

8

12

16

20

23

f

25

29

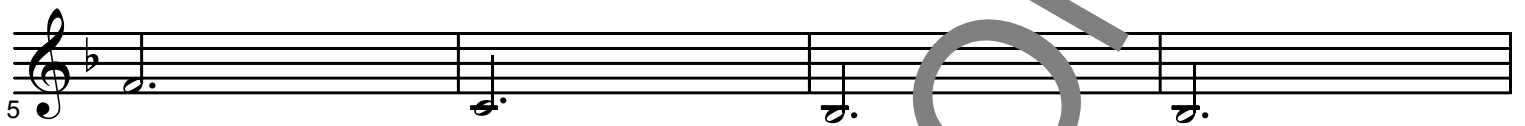
For Review Only

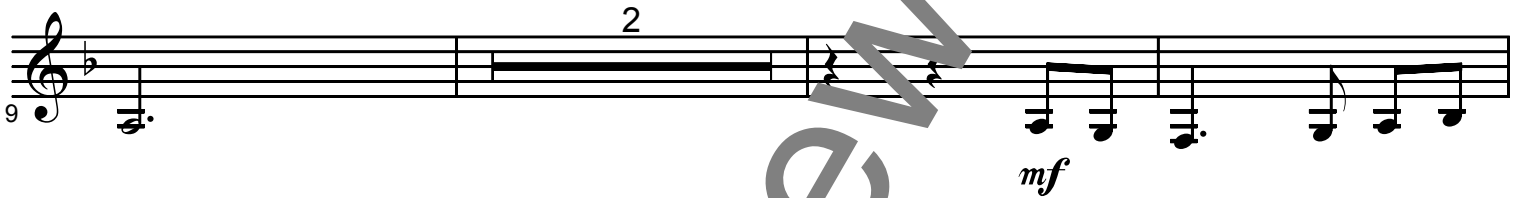
The First Noel

(Tracks 13 & 14)

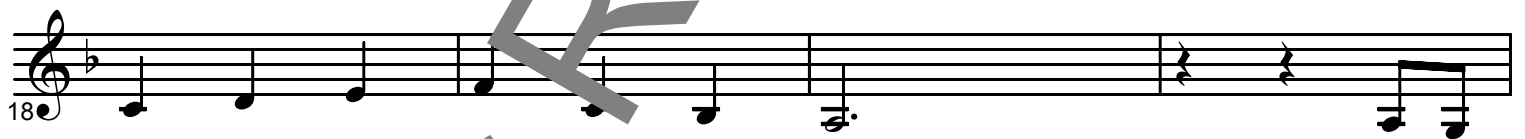
LIGHT LATIN-ROCK

1 

5 

9 

14 

18 

22 

26 

It Came Upon A Midnight Clear

(Tracks 15 & 16)

FLOWING

Musical score for 'It Came Upon A Midnight Clear' (Tracks 15 & 16). The score is written in treble clef, 3/4 time, and B-flat major. It consists of seven staves of music. The first staff (measures 1-4) features a long horizontal line with a '3' above it, indicating a triplet, and a dynamic marking of *mp*. The second staff (measures 5-7) continues the melody. The third staff (measures 8-10) continues the melody. The fourth staff (measures 11-13) features a dynamic marking of *f* at the beginning and *mf* later, with a hairpin crescendo. The fifth staff (measures 14-16) continues the melody. The sixth staff (measures 17-19) continues the melody. The seventh staff (measures 20-21) features a dynamic marking of *f* at the beginning. A box containing the number '21' is placed above the first measure of the seventh staff. A large, diagonal watermark reading 'For Review Only' is overlaid across the entire score.

God Rest Ye Merry Gentlemen

(Tracks 17 & 18)

HALF TIME SHUFFLE

1 3 *mf*

5

9 *f*

13

17

21

24 6 30 *mf*

O Christmas Tree

(Tracks 19 & 20)

WITH JOY!

Musical score for 'O Christmas Tree' in 4/4 time. The score consists of ten staves of music. The first staff (measures 1-5) features a triplet of eighth notes. The second staff (measures 6-10) continues the melody. The third staff (measures 11-15) continues the melody. The fourth staff (measures 16-19) continues the melody. The fifth staff (measures 20-24) features a triplet of eighth notes. The sixth staff (measures 25-29) starts with a boxed measure number '25' and a forte 'f' dynamic. The seventh staff (measures 30-34) continues the melody. The eighth staff (measures 35-39) continues the melody. The ninth staff (measures 40-44) features a triplet of eighth notes and ends with a double bar line.