

IN THAT GREAT GETTIN' UP MORNIN'

*S.(S.)A.B., Accompanied with opt. instruments

P/A CD plus Split Track available (refer to page 2)

Arranged by
TOM FETTKE & THOMAS GRASSI

TRADITIONAL SPIRITUAL
Additional words and music by
TOM FETTKE & THOMAS GRASSI

3 Freely, with gospel styling (♩ = c. 58)

The score is for Soprano Alto, Baritone, and Piano. It begins with a key signature of one flat (B-flat) and a 4/4 time signature. The tempo is 'Freely, with gospel styling' at approximately 58 beats per minute. The Soprano Alto and Baritone parts start with a rest for the first two measures, then enter with a melody. The piano accompaniment starts with a strong chordal accompaniment. Dynamics include *mf* (mezzo-forte), *f* (forte), *subito p* (subito piano), and *mp* (mezzo-piano). The piano part features a triplet of eighth notes in the right hand and a triplet of eighth notes in the left hand. The lyrics are: 'In that great get-tin' up morn - in', fare thee well, fare thee'. The score ends with a double bar line and a repeat sign.

SOPRANO ALTO

BARITONE

PIANO

mf

f *subito p* *mp* *mf*

In that great get-tin' up

morn - in', fare thee well, fare thee

☐ P/A CD plus Split Track: 1–Accompaniment, 2–Performance, 3–7 Split Track Accompaniment.

* Also available for S.A.T.B. (8292-9), S.S.A. (8304-9) and Two-Part (8305-6)

© 2012 Highwoods Music Publishing. (admin. by Music Services).

Sole selling agent for this 2013 edition:

Crystal Sea Music Publishing, exclusively distributed by The Lorenz Corp.

All Rights Reserved. Used by permission.

4
7

rit.

8 Gospel feel (♩ = c. 92)

well, — fare thee well! —

Gospel feel (♩ = c. 92)

rit.

f

f

4

10

B \flat E \flat /B \flat B \flat B \flat E \flat /B \flat

13

f

14

In that great get-tin' up morn-in', fare thee well,—

f

B \flat E \flat /F B \flat C \flat /B \flat B \flat G \flat

16 18

fare thee well! In that great get-tin' up

C9 F⁶ B^b Fm/D E^b F7sus B^b Cm/B^b

8^{vb}

19

morn-in', fare thee well, fare thee well!

B^b Gm C9 F⁶ B^b Fm7(4) Fm7(4)/B^b

22 *mf* TENOR SOLO (*ad lib*)

I'm gon-na tell you 'bout the com-in' of the judgement;

Fare thee well, fare thee well!

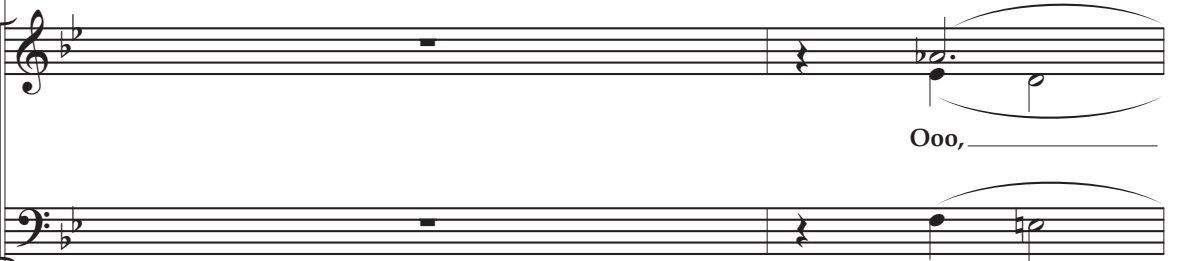
E^bmaj7 Dm7 Gm7

mf

24



I'm gon-na tell you'bout the com-in' of the judge-ment; fare thee well. _____



Ooo, _____



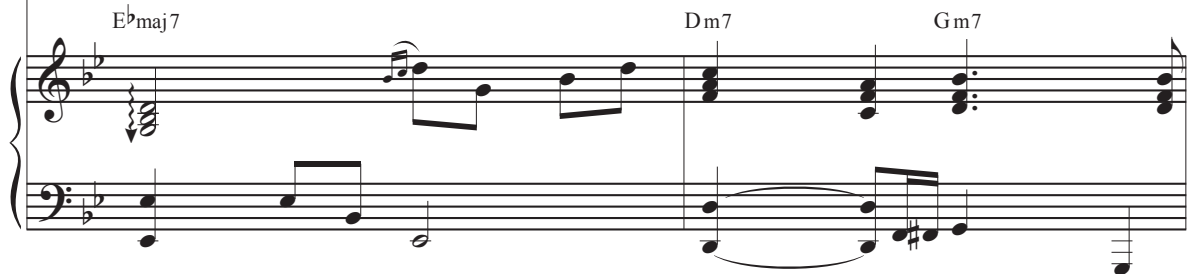
26



There's a bet - ter day a - com - in',



Fare thee well, fare thee well!

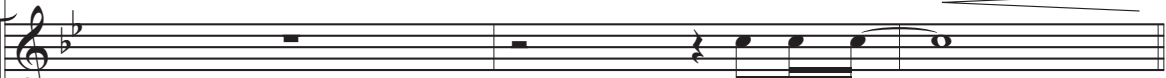


28 5

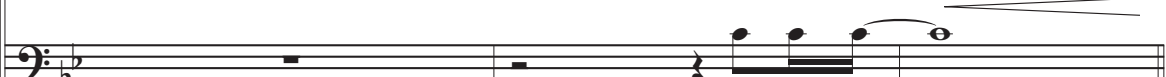


There's a bet-ter day a-com-in', fare thee well! —

Oh, in — that



fair thee well! —



Chord progression: C9, Cm/F, Eb6/F

31

f

(solo ends)



great



Great

get-tin' up morn-in',

fare thee well, —

fare thee well.



Chord progression: Bb, Cm/Bb, Bb, Gm, C9, F9, Bb

In that great get-tin' up morn-in', fare thee well,

Fm *D* *E \flat* *F7sus* *B \flat* *C \flat m* *B \flat* *Gm7*

8^{va}

39 *mf*

When you see the light-nin' flash-in';
fare thee well.

C9 *F $\acute{9}$* *B \flat* *Fm7(4)* *Fm7(4)* *B \flat* *E \flat maj7*

mf